

Churchdown & Innsworth Locality Map and Guide



Introduction

Thinktravel provides you with information about sustainable travel choices in your local area.

Making a few simple changes to your travel patterns can help create a more sustainable community for all; economically, socially and environmentally.

The Thinktravel website allows you to view cycle and walking routes in Gloucestershire, the latest bus routes and plenty of useful tips on how you can save money through making small changes on your journeys around where you live.

The website will also keep you up to date on sustainable travel news in Gloucestershire and also provides information on community events that may be coming to your local area.

For more information about Thinktravel, please contact:

e: enquiries@thinktravel.info

i: www.thinktravel.info

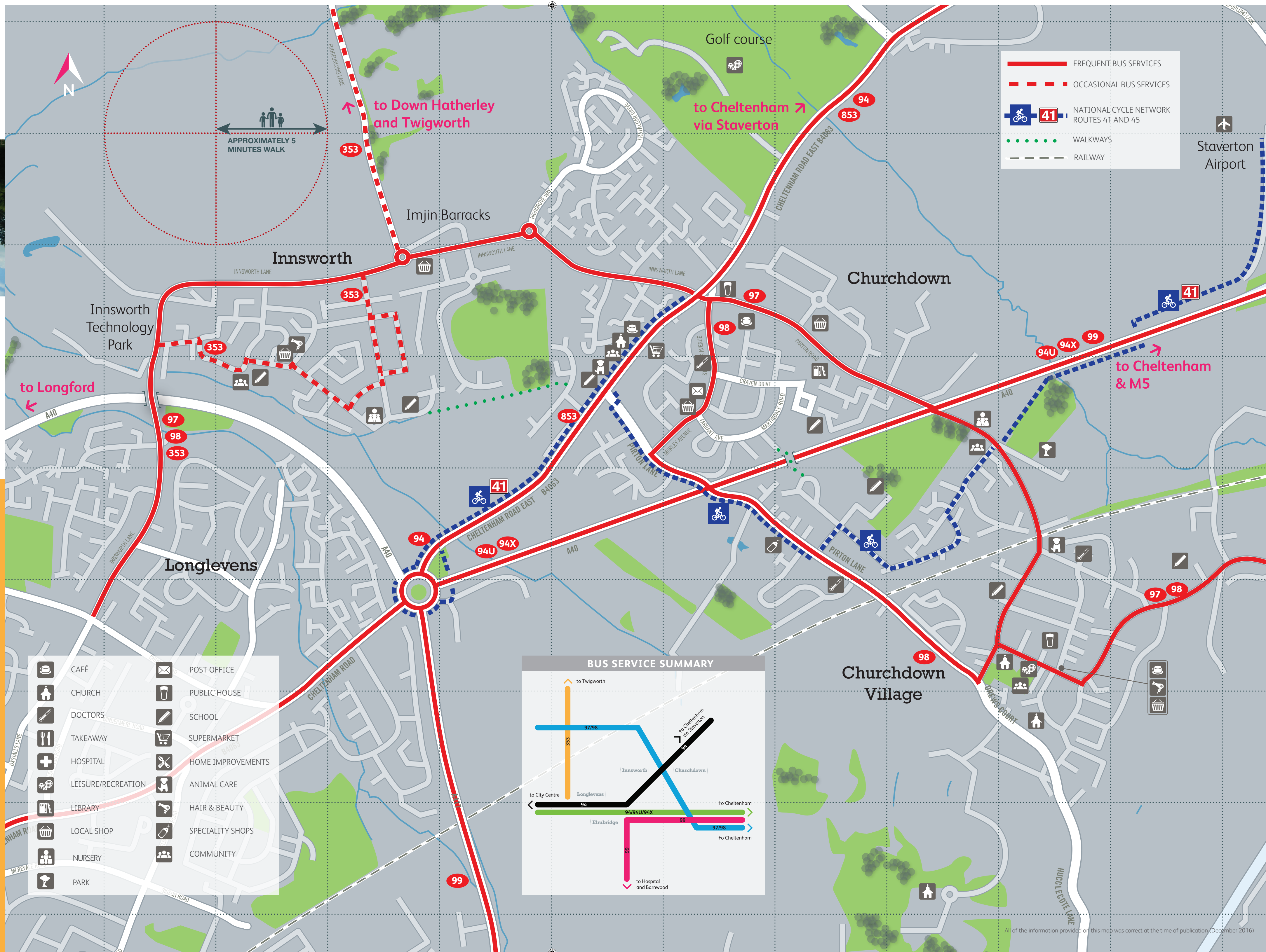
Project sponsored by



Department
for Transport



Gloucestershire
COUNTY COUNCIL



All of the information provided on this map was correct at the time of publication (December 2016)

Think about the way you travel. A small change makes a big difference.

Making the Most Out of Your Local Neighbourhood.

This map has been produced as part of the **Thinktravel** programme. The programme aims to help people make more sustainable travel journeys especially for short local trips.

To get the most out of your community, this map provides an overview of amenities that are easily accessible and close to your home or workplace. It can be used to highlight destinations in your local area, their proximity via sustainable travel routes and provide the information to better plan your journeys in the area to save you time and money.

This map includes the villages of **Churchdown** and **Innsworth**.

There is a comprehensive and frequent public transport network linking the locality map area to the centre of Gloucester. To find out more information please go to the **Thinktravel** website to view the latest bus route maps.

www.thinktravel.info/public-transport

Useful Contacts

Gloucestershire County Council Transport
www.gloucestershire.gov.uk/transport

Gloucestershire Car Share
08700 111 119
www.carsharegloucestershire.com

Gloucester City Council Shopmobility
01452 302 871

Cheltenham Borough Council Shopmobility
01242 255 333

Road Safety Gloucestershire
www.roadsafety-gloucestershire.org.uk

Lift Training
01242 527 631
www.liftproject.co.uk

National Rail
www.nationalrail.co.uk

First Great Western
www.firstgreatwestern.co.uk

Stagecoach Gloucester Area
www.stagecoachbus.com/gloucester

National Traveline
www.traveline.info

Transport Direct
www.transportdirect.info

Dial-A-Ride
01452 502 100
www.glosdar.plus.com

Key Shops and Services

Medical services

Churchdown Surgery
a: 24 St John's Avenue, Churchdown, Gloucester, GL3 2DB
t: 01452 899 762

Opening Hours
Monday to Thursday
08:00 – 13:00 & 14:00 – 18:30
Friday 08:00 – 13:00 & 14:00 – 18:00
Saturday & Sunday Closed

Badham Pharmacy Ltd
a: 33 Morley Avenue, Churchdown, Gloucester, GL3 2BL
t: 01452 712 286

Opening Hours
Monday to Friday 09:00 – 19:00
Saturday 09:00 – 13:00
Sunday Closed

Churchdown Osteopaths
a: 102 Chosen Drive, Churchdown, Gloucester, GL3 2QU
t: 01452 714 511

Opening Hours
Monday to Friday 09:00 – 17:00
Saturday & Sunday Closed

Groceries & Eateries

The Chosen Coffee Shop
a: 8C Blacksmith Lane, Churchdown, Gloucester, GL3 2EU
t: 01452 856 818

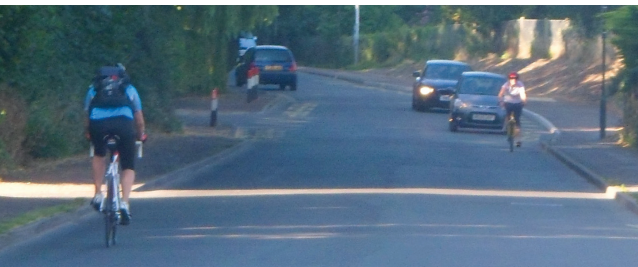
Opening Hours
Monday to Saturday 09:00 – 16:30
Sunday Closed

Mid Counties Co-Op
a: 70, St Johns Avenue, Churchdown, GL3 2BX
t: 01452 713 011

Opening Hours
Monday to Sunday 07:00 – 22:00

Krishna News
a: 100 Chosen Drive, Churchdown, Gloucester, GL3 2QU
t: 01452 712 473

Opening Hours
Monday to Wednesday 06:00 – 18:00
Thursday to Saturday 06:00 – 18:30
Sunday 07:00 – 12:30



Access for All

Thinktravel has produced a series of easy, accessible walks to help people of all abilities to access their local area and amenities. Visit the Thinktravel website for maps of these routes and additional information on walking in the county.

Most services already have low floor easy access buses. This is likely to be available on all services soon. There is also a range of Community Transport, Dial-A-Ride and Voluntary Car Schemes available in Gloucestershire to meet local needs.

Do you feel unsure or need help and confidence building to use buses so that you can access services, education, training or employment? Gloucestershire encourages independent travel training through bespoke projects and organisations who specialise in providing support to disabled, disadvantaged, vulnerable young adults and older people.

To find out more about these projects and services visit <http://www.thinktravel.info/my-community>.

Cheltenham and Gloucester also provide **Shopmobility** services in the town and city centres for those that have limited mobility.

The service is available from **Monday to Saturday 09:30 – 17:00**

For more information visit our **Thinktravel** website to find the link to **Shopmobility** or call:

Gloucester – 01452 302 871
Cheltenham – 01242 255 333

Be sure to book in advance to avoid disappointment

Walking and Cycling

Why not try walking or cycling for work and leisure trips?

Churchdown and Innsworth all benefit from close links to the town centre, making easy access for residents walking and cycling to work or to the shops. There are also walks for all abilities; around Chosen Hill or the Churchdown Tree Trail. For more details, please visit the Churchdown Parish Council Website. National Cycle Network Route 41 passes through the village of Churchdown and into the centre of Gloucester.

You may be surprised how much exercise you could get just by walking or cycling to your local shops or to work.

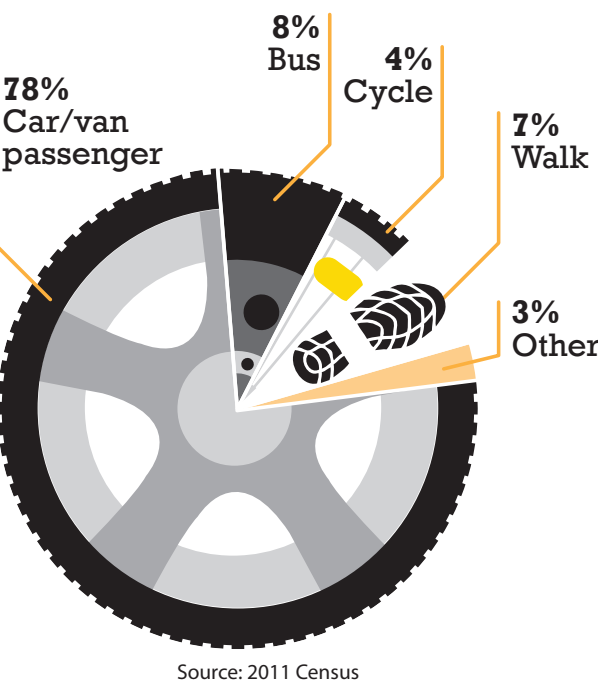
Cycling is one of the cheapest ways of getting around. You can cover more than 2 miles in 15 minutes. It's also a great way to keep fit and healthy. Did you know that cycling for 20 minutes a day at 10mph burns 90 calories?

You can plan your cycle route on the **Thinktravel** website, using the new downloadable Gloucester Cycle Map and compare the cost of cycling to other modes of transport using the **Thinktravel My Journey** Calculator.

With the Cotswolds right on your doorstep there are plenty of great cycling and walking routes to try. The new **Cotswold Discover Ticket** lets you combine walking with public transport. So you can use the bus or train to take you so far, and then walk or cycle the rest of the way.

Did you know?

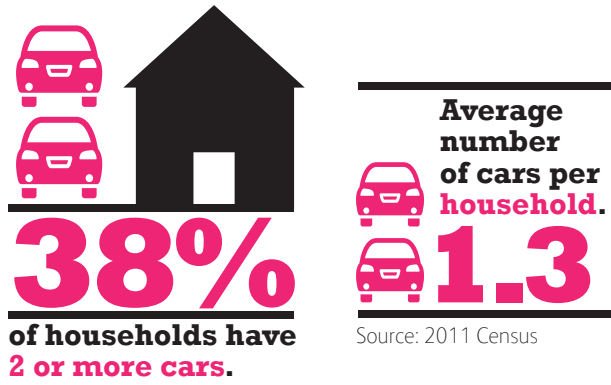
How people within the local area travel to work



78%

of people on average within the local area travel to work by car/van as either a driver or passenger

Source: 2011 Census



65% of people on average within the local area work within 5km of where they live

Source: 2001 Census

Community facilities: Churchdown

Churchdown Community Centre
a: Parton Road, Churchdown, GL3 2JH
t: 01452 712 553
i: www.churchdowncommunityassociation.org.uk

G13 Community Hub
a: Cheltenham Road East, Churchdown
t: 01452 715 058
i: www.g13communityhub.org.uk

Churchdown Library
a: Parton Road, Churchdown, GL3 2AF
t: 01452 712 504

Opening Hours
Sunday & Monday Closed
Tuesday 10:00 – 13:00 & 14:00 – 18:00
Wednesday to Friday
10:00 – 13:00 & 14:00 – 17:00
Saturday 10:00 – 13:00



Community facilities: Innsworth

Innsworth Community Hall
a: Rookery Road, Innsworth, GL3 1AU
t: 01452 739 053
i: www.grcc.org.uk

Innsworth Junior School
a: Rookery Road, Innsworth, GL3 1AX
t: 01452 730 377
i: www.innsworthjunior.org.uk

Noah's Ark Day Nursery
a: 54 Mottershead Drive, Innsworth, GL2 1AX
t: 01452 730 018
i: www.noahsarknurseries.co.uk



For a PDF copy of this map and to see other maps in our range please go to www.thinktravel.info/communities

Car Sharing & Saving

£1000 The average commuter car sharer can save £1000 a year on the cost of driving alone

Car sharing spreads the cost and reduces congestion. Drive to work with a colleague one day and then they can drive you the next day.

You don't even have to own a car or have a driving license to join.

For lots more information visit www.carsharegloucestershire.com

Or how about reducing your fuel costs with ecodriving?

Ecodriving is the most energy-efficient form of driving; it will reduce your fuel cost and make your journey to work safer. A few simple actions will help you in saving fuel, such as making sure your tyres are the right pressure and removing any excess weight from your vehicle.

Visit the **Thinktravel** website to find some more simple **ecodriving** techniques you could use.

You can also calculate the cost of your car journey and compare it with other modes of transport on the **Thinktravel** website using the **My Journey** calculator.

Public Transport

Travelling by bus in Gloucestershire is easy, there are a range of routes and community transport services that connect towns, villages and rural areas with urban centres.

Bus Services for the Churchdown, Innsworth and Longford areas are the 94, 94U, 94X, 97, 98, 99, & 853. For further information on these bus services please consult the Thinktravel bus maps or visit the Thinktravel website.

SERVICE NO	MON-FRI	SATURDAY	SUNDAY
94	Every 10 minutes	Every 10 minutes	Every 15 minutes
94U	Every 30 minutes	No Service	No Service
94X	2 Journeys	No Service	No service
97	Hourly	Hourly	5 Journeys
98	Hourly	Hourly	5 Journeys
99*	Every 30 minutes	No Service	No Service
853	2 Journeys	2 Journeys	1 Journey

* 99 Hospital service, Limited stops.

The **Thinktravel** website also provides lots of helpful information on other public transport such as Rail Travel and Park & Ride services. Or follow the links provided on the **Useful Contacts** list.



Local walks around Churchdown



All of the information provided on this map was correct at the time of publication (December 2016)